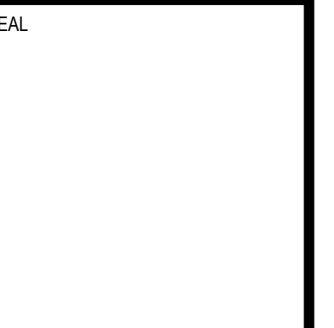


THIS DRAWING IS THE PROPERTY OF ARBOR ENGINEERING, INC. AND IS FURNISHED WITH THE CONDITION THAT IT IS NOT TO BE ALTERED WITHOUT THE WRITTEN AUTHORIZATION OF ARBOR ENGINEERING, INC. FURTHERMORE, THIS DRAWING IS NOT TO BE COPIED, REPRODUCED OR USED BY OTHERS EXCEPT AS REQUIRED FOR THE PROJECT AND SITE SPECIFICALLY IDENTIFIED HEREIN.

[illegible]

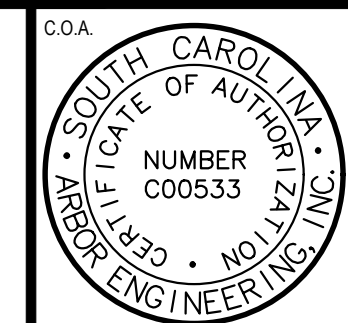
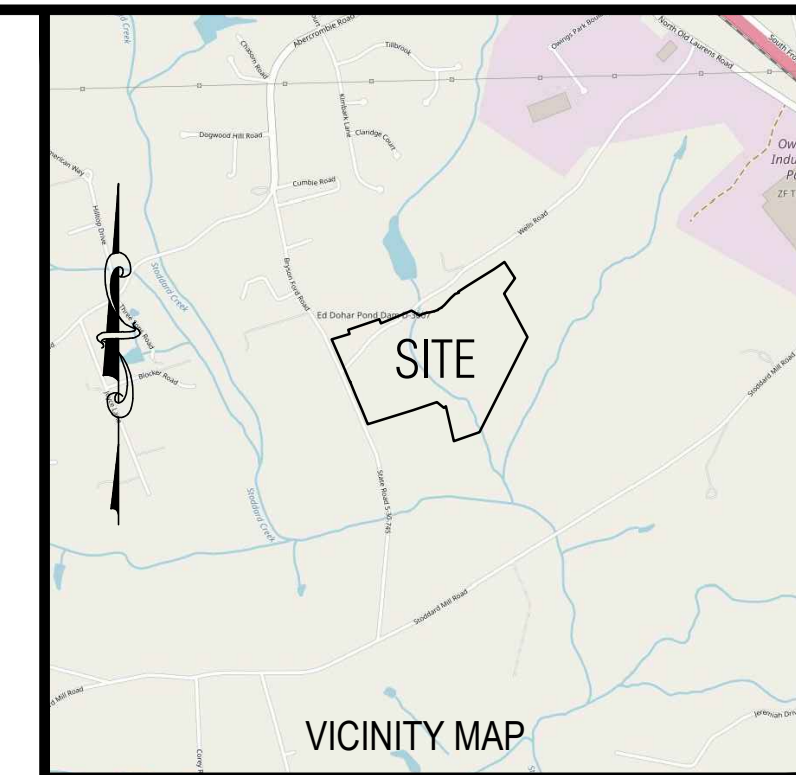
--

DRAWING NO.	SHEET NO.
L-100	1 OF 6



THE UTILITIES SHOWN ARE SHOWN FOR THE CONTRACTOR'S CONVENIENCE ONLY. THERE MAY BE OTHER UTILITIES NOT SHOWN ON THESE PLANS. THE SURVEYOR ASSUMES NO RESPONSIBILITY FOR THE LOCATIONS SHOWN AND IT SHALL BE THE CONTRACTOR'S RESPONSIBILITY TO VERIFY THE LOCATIONS OF ALL UTILITIES.



[illegible]

### LEGEND

--	--

WELLS  
CREEK  
SUBDIVISION

GRAY COURT      SOUTH CAROLINA

# STREET TREE LANDSCAPE PLAN

DRAWN:	AMA	DATE:	JULY 14, 2021
DESIGN:	AMA	HORIZONTAL SCALE:	1:100
APPROVED:	AMA	VERTICAL SCALE:	N/A

GRAPHIC SCALE  
100' 0' 100' 200'  
SCALE: 1"=100'

JOB NO. 21021

DRAWING NO. <b>L-101</b>	SHEET NO. <b>2 OF 6</b>
-----------------------------	----------------------------

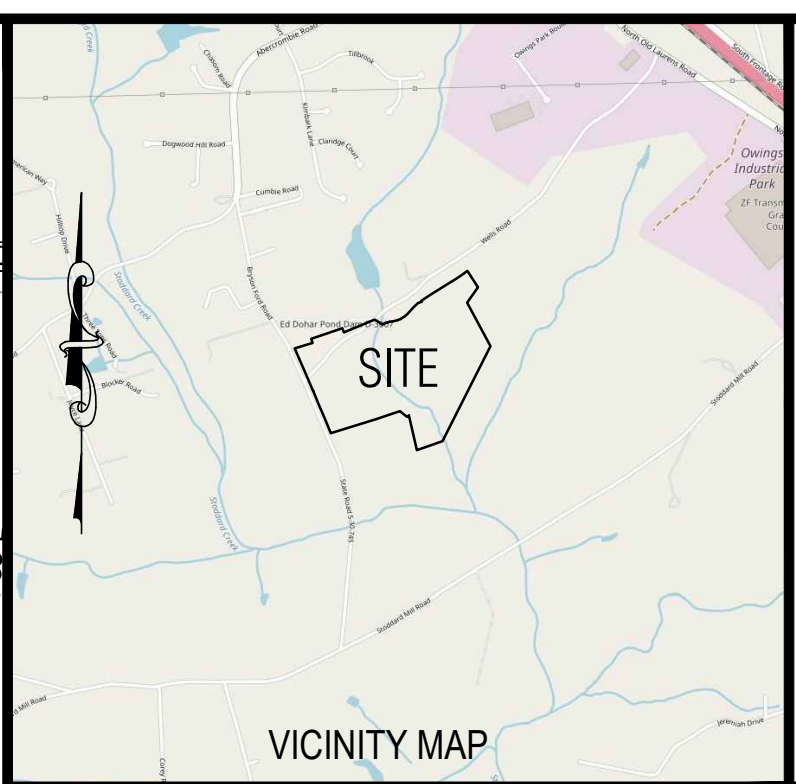
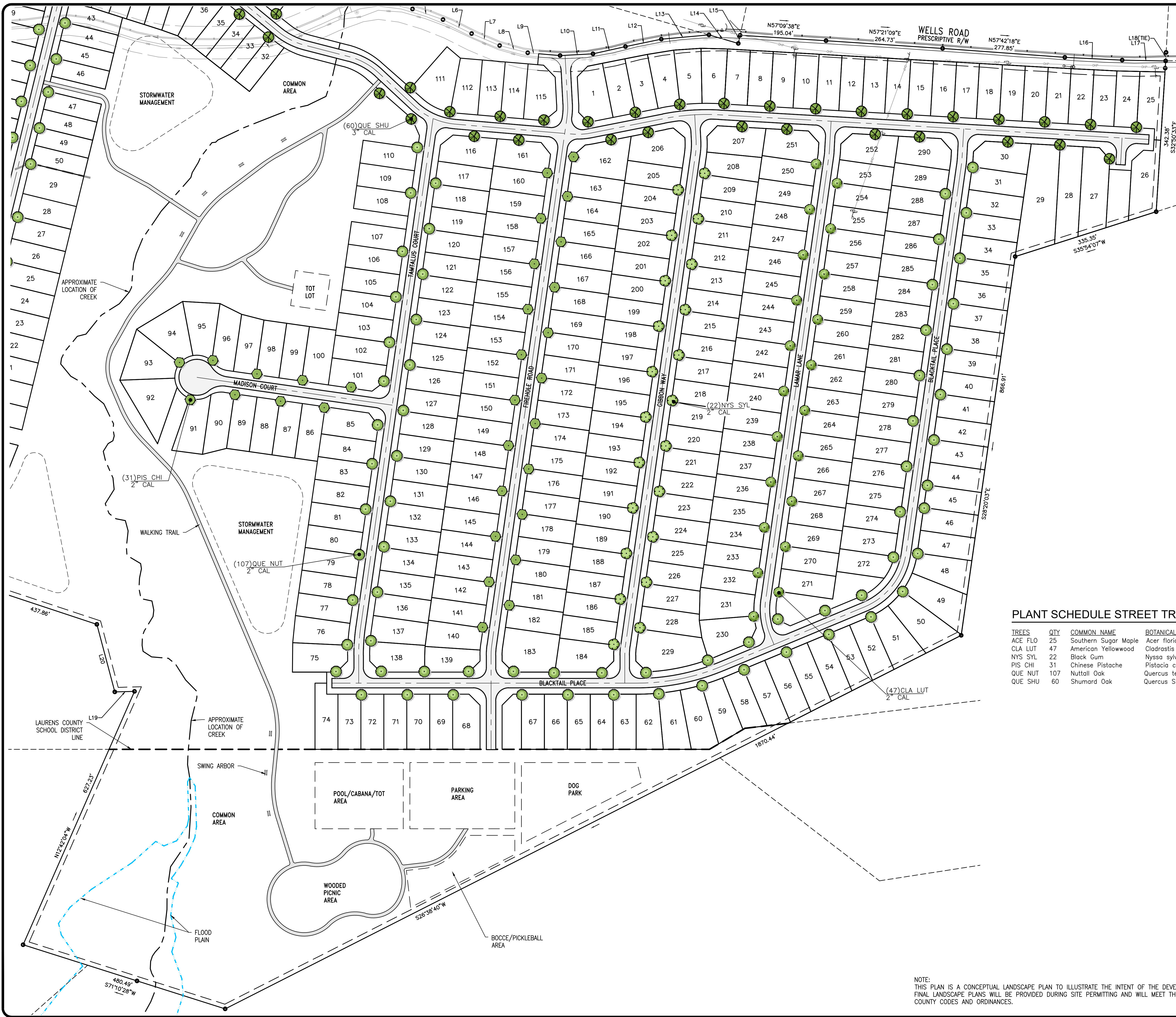


PLANT SCHEDULE STREET TREES					
TREES	QTY	COMMON NAME	BOTANICAL NAME	SIZE	REMARKS
ACE FLO	25	Southern Sugar Maple	Acer floridanum	2" cal	
CLA LUT	47	American Yellowwood	Cladrastis lutea	2" cal	
NYS SYL	22	Black Gum	Nyssa sylvatica	2" cal	
PIS CHI	31	Chinese Pistache	Pistacia chinensis	2" cal	
QUE NUT	107	Nuttall Oak	Quercus texana	2" cal	
QUE SHU	60	Shumard Oak	Quercus shumardii	2" cal	

NOTE:  
THIS PLAN IS A CONCEPTUAL LANDSCAPE PLAN TO ILLUSTRATE THE INTENT OF THE DEVELOPER TO LANDSCAPE WELLS CREEK SUBDIVISION.  
FINAL LANDSCAPE PLANS WILL BE PROVIDED DURING SITE PERMITTING AND WILL MEET THE REQUIREMENTS SET FORTH WITHIN THE LAURENS  
COUNTY CODES AND ORDINANCES.



© 2015 Arbor Engineering, Inc. THIS DRAWING IS THE PROPERTY OF ARBOR ENGINEERING, INC. AND IS FURNISHED WITH THE CONDITION THAT IT IS NOT TO BE ALTERED WITHOUT THE WRITTEN AUTHORIZATION OF ARBOR ENGINEERING, INC. FURTHERMORE, THIS DRAWING IS NOT TO BE COPIED, REPRODUCED OR USED BY OTHERS EXCEPT AS REQUIRED FOR THE PROJECT AND SITE SPECIFICALLY IDENTIFIED HEREIN.



Box 263 Greenville, S.C. 29602  
Telephone: (864) 235-3589 Fax: 233-6274  
Email: arbor@arborengineering.com

LANDSCAPE ARCHITECTS - CIVIL ENGINEERS  
RECREATIONAL PLANNERS - LAND PLANNERS - URBAN PLANNERS

C.O.A.SEAL

REVISIONS			
NO.	DATE	DESCRIPTION	BY
1	7/14/21	RELEASED FOR LAURENS COUNTY REVIEW	AMA

LEGEND

PLANT SCHEDULE STREET TREES

TREES	QTY	COMMON NAME	BOTANICAL NAME	SIZE	REMARKS
ACE FLO	25	Southern Sugar Maple	Acer floridanum	2" cal	
CLA LUT	47	American Yellowwood	Cladrastis lutea	2" cal	
NYS SYL	22	Black Gum	Nyssa sylvatica	2" cal	
PIS CHI	31	Chinese Pistache	Pistacia chinensis	2" cal	
QUE NUT	107	Nuttall Oak	Quercus texana	2" cal	
QUE SHU	60	Shumard Oak	Quercus shumardii	2" cal	

NOTE:  
THIS PLAN IS A CONCEPTUAL LANDSCAPE PLAN TO ILLUSTRATE THE INTENT OF THE DEVELOPER TO LANDSCAPE WELLS CREEK SUBDIVISION. FINAL LANDSCAPE PLANS WILL BE PROVIDED DURING SITE PERMITTING AND WILL MEET THE REQUIREMENTS SET FORTH WITHIN THE LAURENS COUNTY CODES AND ORDINANCES.

WELLS CREEK SUBDIVISION

GRAY COURT    SOUTH CAROLINA

STREET TREE LANDSCAPE PLAN

DRAWN: AMA    DATE: JULY 14, 2021

DESIGN: AMA    HORIZONTAL SCALE: 1:100

APPROVED: AMA    VERTICAL SCALE: N/A

GRAPHIC SCALE: 100' 0' 100' 200'

SCALE: 1"=100'

JOB NO. 21021

DRAWING NO. L-102

SHEET NO. 3 OF 6

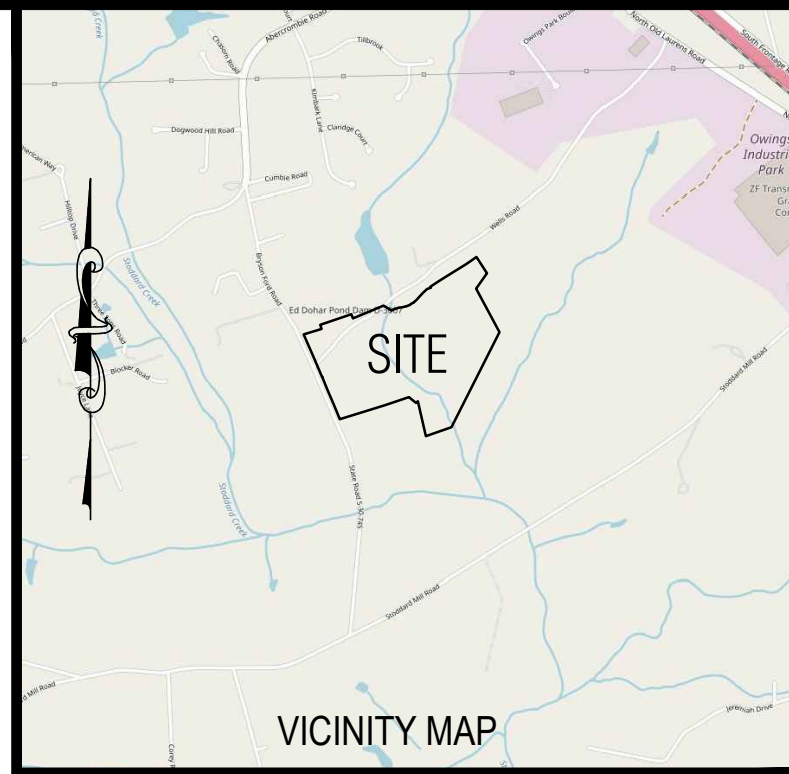


© 2015 Arbor Engineering, Inc. THIS DRAWING IS THE PROPERTY OF ARBOR ENGINEERING, INC. AND IS FURNISHED WITH THE CONDITION THAT IT IS NOT TO BE ALTERED WITHOUT THE WRITTEN AUTHORIZATION OF ARBOR ENGINEERING, INC. FURTHERMORE, THIS DRAWING IS NOT TO BE COPIED, REPRODUCED OR USED BY OTHERS EXCEPT AS REQUIRED FOR THE PROJECT AND SITE SPECIFICALLY IDENTIFIED HEREIN.



BRYSON FORD ROAD

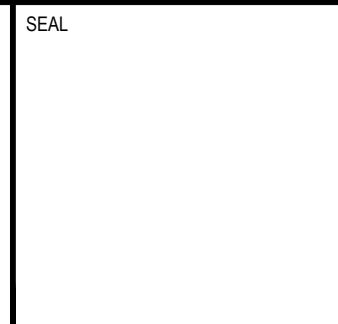
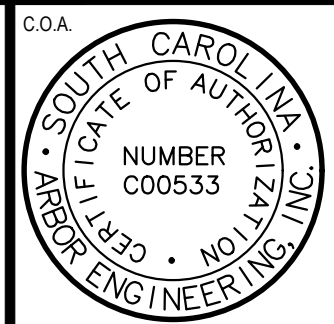
NOTE:  
THIS PLAN IS A CONCEPTUAL LANDSCAPE PLAN TO ILLUSTRATE THE INTENT OF THE DEVELOPER TO LANDSCAPE WELLS CREEK SUBDIVISION.  
FINAL LANDSCAPE PLANS WILL BE PROVIDED DURING SITE PERMITTING AND WILL MEET THE REQUIREMENTS SET FORTH WITHIN THE LAURENS COUNTY CODES AND ORDINANCES.



**ARBOR  
ENGINEERING**

Box 263 Greenville, S.C. 29602  
Telephone: (864) 235-3589 Fax: 233-6274  
Email: arbor@arborengineering.com

LANDSCAPE ARCHITECTS - CIVIL ENGINEERS  
RECREATIONAL PLANNERS - LAND PLANNERS - URBAN PLANNERS



REVISIONS

NO.	DATE	DESCRIPTION	BY
1	7/14/21	RELEASED FOR LAURENS COUNTY REVIEW	AMA

LEGEND

WELLS  
CREEK  
SUBDIVISION

GRAY COURT SOUTH CAROLINA

ENTRANCE  
LANDSCAPE  
PLAN

DRAWN:	AMA	DATE:	JULY 14, 2021
DESIGN:	AMA	HORIZONTAL SCALE:	1:20
APPROVED:	AMA	VERTICAL SCALE:	N/A
GRAPHIC SCALE 0' 20' 40' SCALE: 1"=20'			
JOB NO. 21021			

DRAWING NO. L-103	SHEET NO. 4 OF 6
-------------------	------------------

PLANT SCHEDULE ENTRANCE ROAD

<u>TREES</u>	<u>QTY</u>	<u>COMMON NAME</u>	<u>BOTANICAL NAME</u>	<u>SIZE</u>	<u>REMARKS</u>	
BSM	11	Bracken's Southern Magnolia	Magnolia grandiflora 'Brackens'	12'		
TCM	4	Tuscarora Crape Myrtle	Lagerstroemia indica 'Tuscarora'	12'		
WF	3	White Fringetree	Chionanthus virginicus	1 1/2" cal		
<u>SHRUBS</u>	<u>QTY</u>	<u>COMMON NAME</u>	<u>BOTANICAL NAME</u>	<u>SIZE</u>	<u>REMARKS</u>	
EGA	10	Edward Goucher Abelia	Abelia x grandiflora 'Edward Goucher'	3 gal		
ESH	27	Endless Summer Hydrangea	Hydrangea macrophylla 'Bailmer'	3 gal		
FO	4	Fortune's Osmanthus	Osmanthus fortunei	6'		
SWN	9	Summer Wine Ninebark	Physocarpus opulifolius 'Summer Wine'	3 gal		
VJD	40	Vintage Jade Distylium	Distylium x 'Vintage Jade'	5 gal		
<u>SHRUB AREAS</u>	<u>QTY</u>	<u>COMMON NAME</u>	<u>BOTANICAL NAME</u>	<u>CONT</u>	<u>SPACING</u>	<u>REMARKS</u>
PMG	140	Pink Muhly Grass	Muhlenbergia capillaris	1 gal	36" o.c.	
<u>GROUND COVERS</u>	<u>QTY</u>	<u>COMMON NAME</u>	<u>BOTANICAL NAME</u>	<u>CONT</u>	<u>SPACING</u>	<u>REMARKS</u>
BBL	696	Big Blue Lilyturf	Liriope muscari 'Big Blue'	1 qt	12" o.c.	
<u>PERENNIALS</u>	<u>QTY</u>	<u>COMMON NAME</u>	<u>BOTANICAL NAME</u>	<u>CONT</u>	<u>SPACING</u>	<u>REMARKS</u>
HRD	580	Happy Returns Daylily	Hemerocallis x 'Happy Returns'	1 gal	18" o.c.	

MONUMENT SIGN  
LOCATION

SCDOT RIGHT OF WAY

MONUMENT SIGN  
LOCATION

(116)HRD  
1 gal

(206)BBL  
1 QT.

(8)ESH  
3 GAL

(60)PMG  
1 gal

(13)VJD  
5 GAL

(6)BSM  
12

(7)SWN  
3 GAL

(1)WF  
1 1/2" CAL

(80)BBL  
1 QT.

(80)PMG  
1 gal

(5)ESH  
3 GAL

(4)EGA  
3 GAL

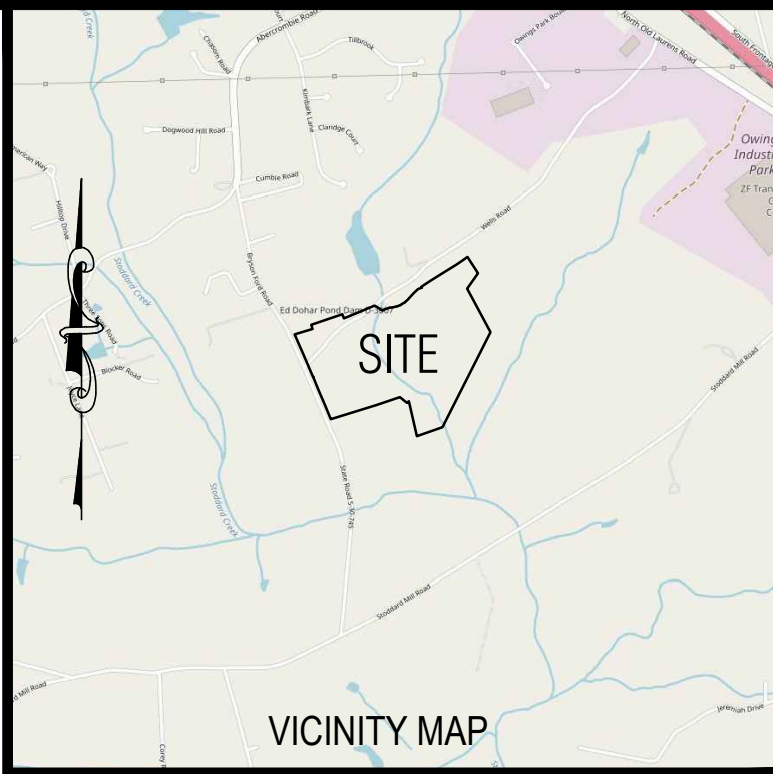
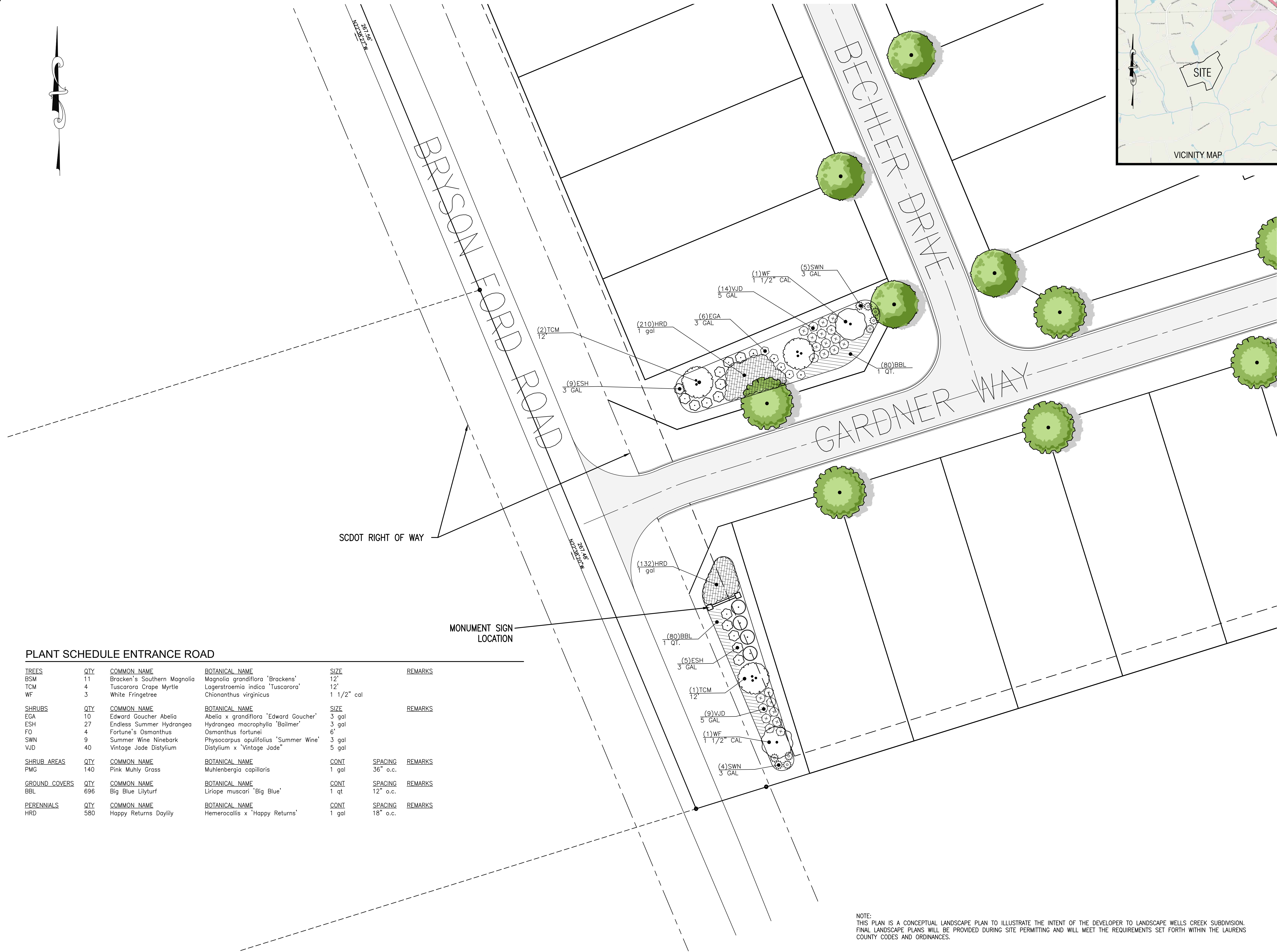
(115)HRD  
1 gal

(5)BSM  
12

(1)TCM  
12

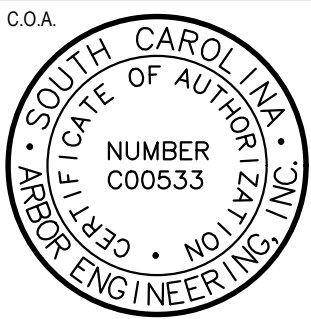


© 2012 Arbor Engineering, Inc. THIS DRAWING IS THE PROPERTY OF ARBOR ENGINEERING, INC. AND IS FURNISHED WITH THE CONDITION THAT IT IS NOT TO BE ALTERED WITHOUT THE WRITTEN AUTHORIZATION OF ARBOR ENGINEERING, INC. FURTHERMORE, THIS DRAWING IS NOT TO BE COPIED, REPRODUCED OR USED BY OTHERS EXCEPT AS REQUIRED FOR THE PROJECT AND SITE SPECIFICALLY IDENTIFIED HEREIN.



Box 263 Greenville, S.C. 29602  
Telephone: (864) 235-3589 Fax: 233-6274  
Email: arbor@arborengineering.com

LANDSCAPE ARCHITECTS - CIVIL ENGINEERS  
RECREATIONAL PLANNERS - LAND PLANNERS - URBAN PLANNERS



#### REVISIONS

NO.	DATE	DESCRIPTION	BY
1	7/14/21	RELEASED FOR LAURENS COUNTY REVIEW	AMA

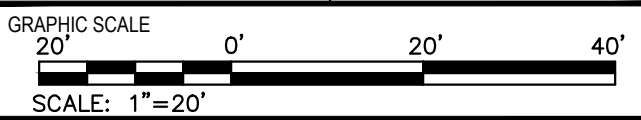
#### LEGEND

### WELLS CREEK SUBDIVISION

GRAY COURT SOUTH CAROLINA

### ENTRANCE LANDSCAPE PLAN

DRAWN:	AMA	DATE:	JULY 14, 2021
DESIGN:	AMA	HORIZONTAL SCALE:	1:20
APPROVED:	AMA	VERTICAL SCALE:	N/A



JOB NO. 21021

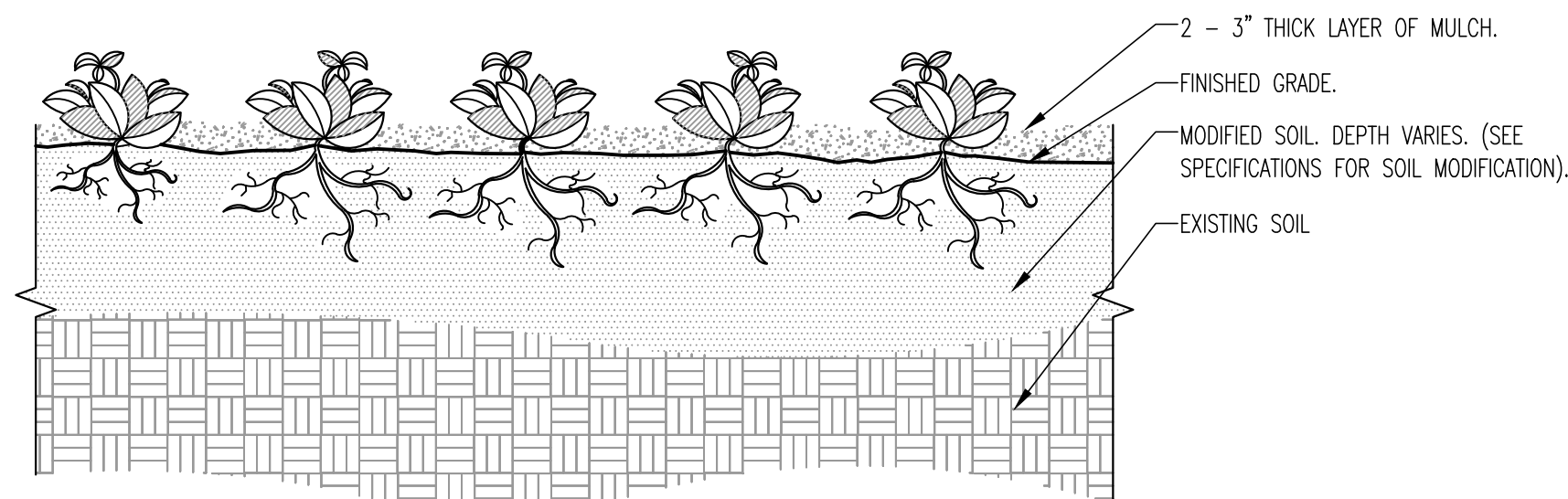
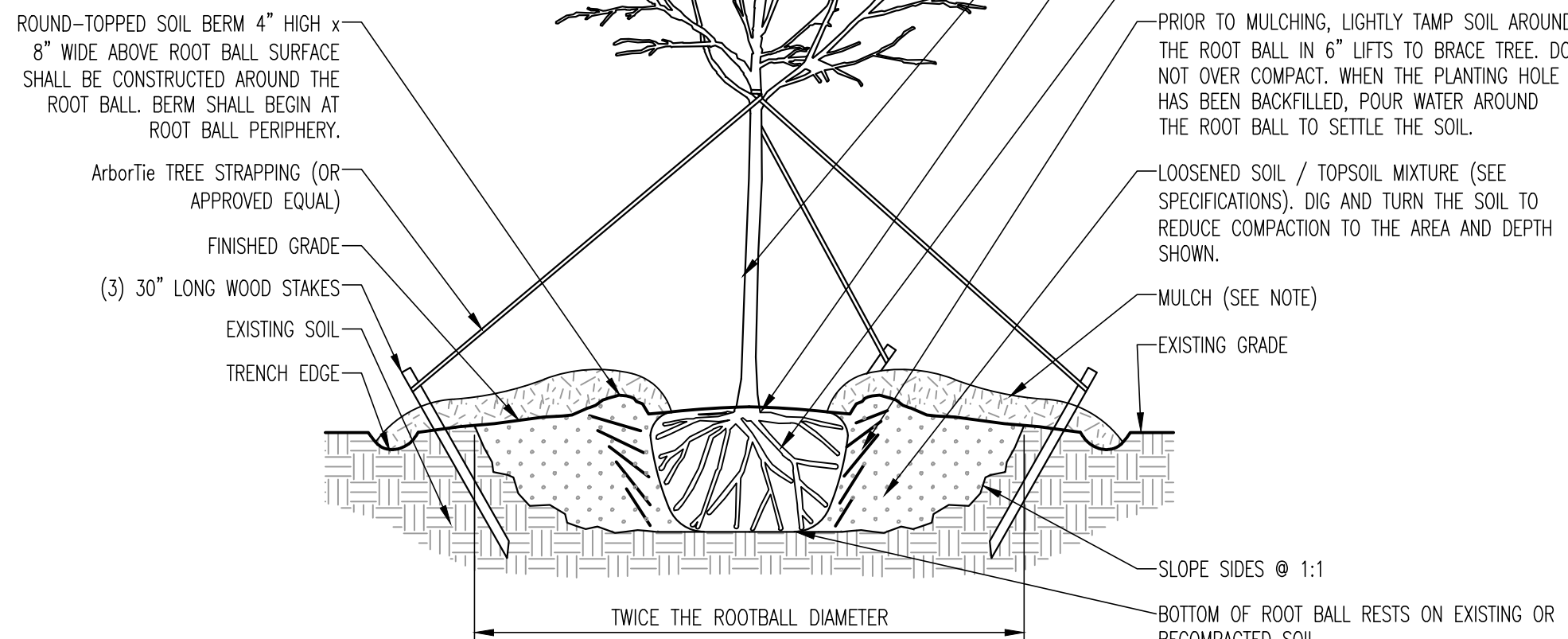
DRAWING NO. L-104 SHEET NO. 5 OF 6

NOTE:  
THIS PLAN IS A CONCEPTUAL LANDSCAPE PLAN TO ILLUSTRATE THE INTENT OF THE DEVELOPER TO LANDSCAPE WELLS CREEK SUBDIVISION. FINAL LANDSCAPE PLANS WILL BE PROVIDED DURING SITE PERMITTING AND WILL MEET THE REQUIREMENTS SET FORTH WITHIN THE LAURENS COUNTY CODES AND ORDINANCES.



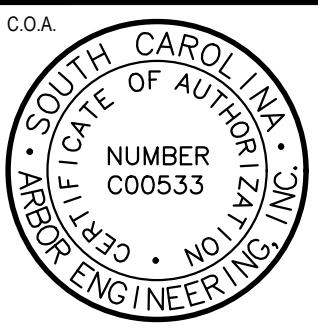
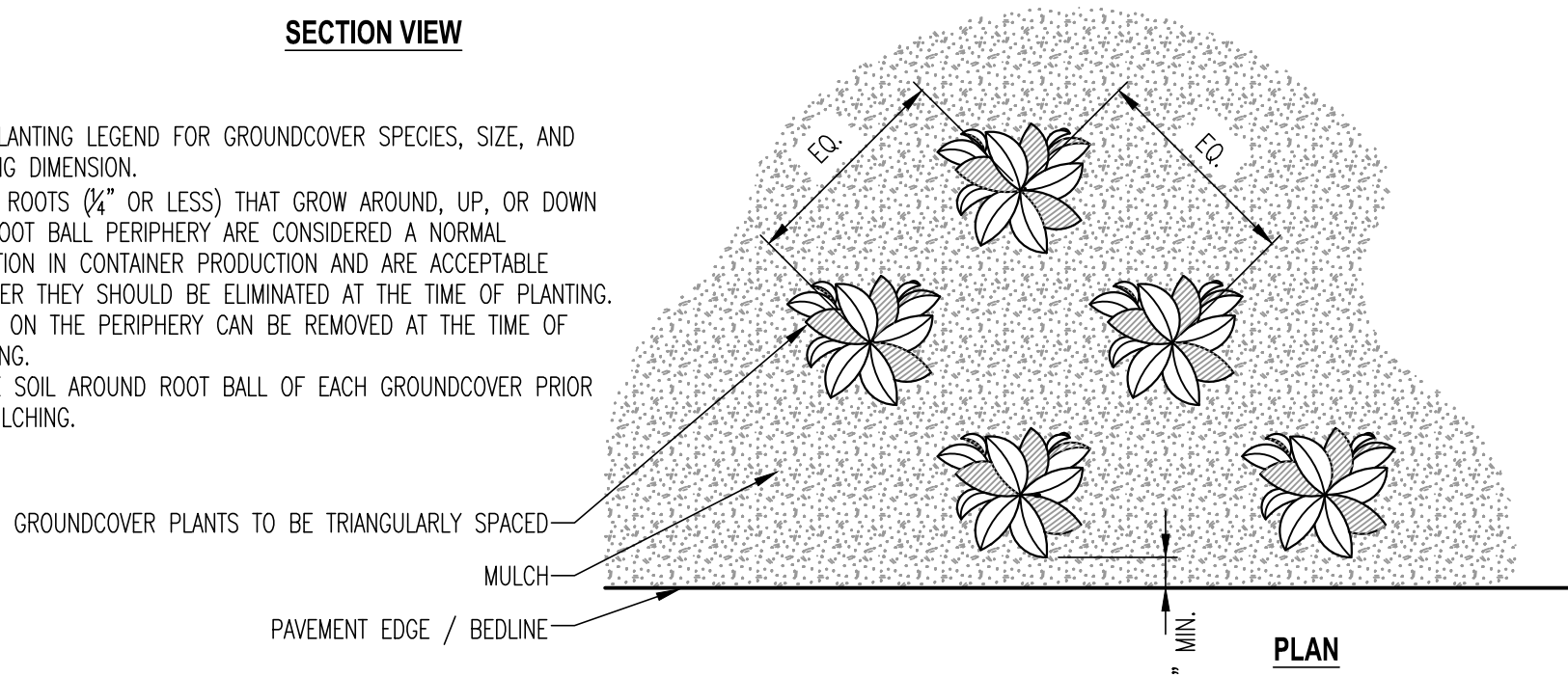
NOTES:

1. REMOVE EXCESS SOIL FROM TOP OF ROOTBALL TO EXPOSE ROOT FLARE. REMOVE ANY GROWING ROOTS GROWING ABOVE ROOT FLARE. CUT BOTTOM OF WIRE BASKET & REMOVE BEFORE SETTING TREE. SET TREE IN HOLE AND STABILIZE ROOT BALL IN PLACE. REMOVE REST OF WIRE BASKET, STRAPS, AND BURLAP, AND BACKFILL HOLE. TAMP FIRMLY TO PREVENT ROOTBALL FROM BECOMING LOOSE. STAKE TREE. ANY TREES THAT BECOME LOOSE IN ROOTBALL WILL HAVE TO BE REPLACED AT CONTRACTOR'S EXPENSE.
2. MULCH WITH 3-4" DARK ORGANIC COMPOSTED DOUBLE GRADE HARDWOOD CHIPS. (QUANTITY NOTED ON DRAWINGS) DO NOT PLACE MULCH IN CONTACT WITH TREE TRUNK. NO MORE THAN 1" OF MULCH ON TOP OF ROOTBALL. KEEP MULCH 4" AWAY FROM TRUNK BASE.



NOTES:

1. SEE PLANTING LEGEND FOR GROUNDCOVER SPECIES, SIZE, AND SPACING DIMENSION.
2. SMALL ROOTS ( $\frac{1}{2}$ " OR LESS) THAT GROW AROUND, UP, OR DOWN THE ROOT BALL PERIPHERY ARE CONSIDERED A NORMAL CONDITION IN CONTAINER PRODUCTION AND ARE ACCEPTABLE. HOWEVER THEY SHOULD BE ELIMINATED AT THE TIME OF PLANTING. ROOTS ON THE PERIPHERY CAN BE REMOVED AT THE TIME OF PLANTING.
3. SETTLE SOIL AROUND ROOT BALL OF EACH GROUNDCOVER PRIOR TO MULCHING.



DRAWING NO. <div style="font-size: 2em; font-weight: bold; margin-top: 10px;">L-105</div>	SHEET NO. <div style="font-size: 1.5em; font-weight: bold; margin-top: 10px;">6 OF 6</div>
--	---